

# AVAILABLE FOR SALE OR LEASE

## Culver & University

Rochester, NY



### Features

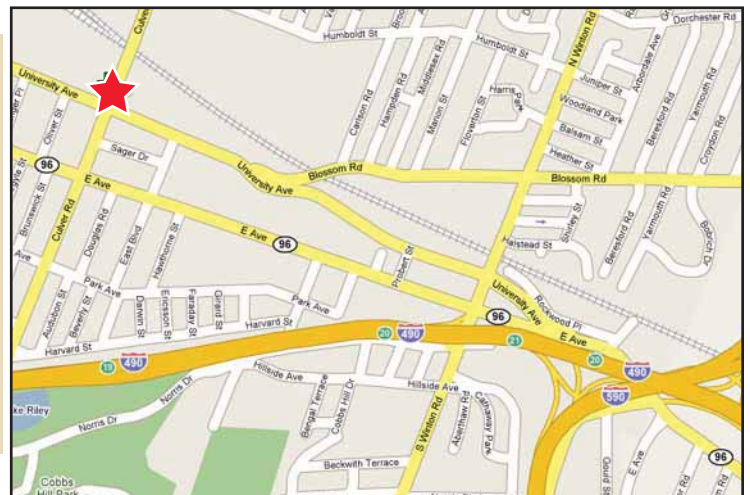
#### Location:

Located at the intersection of Culver & University, in the heart of the City of Rochester. Close proximity to East and Park Ave. Come join PriceRite (38,000 ± SF grocery store) Opened October 19, 2008. Great visibility.

#### Details:

**Building # 1 Size:** 3,100 ± SF

**Building # 2 Size:** 15,700 ± SF Approved Site



### Demographic Report

Culver & University	1 Mile	3 Mile	5 Mile
Population	20,493	151,032	307,718
Households	10,669	65,278	127,695
Med HH Income	\$43,361	\$41,548	\$44,715

Presented by:

**J. Fiorie & Co.**

Phone:

**585-381-8500**

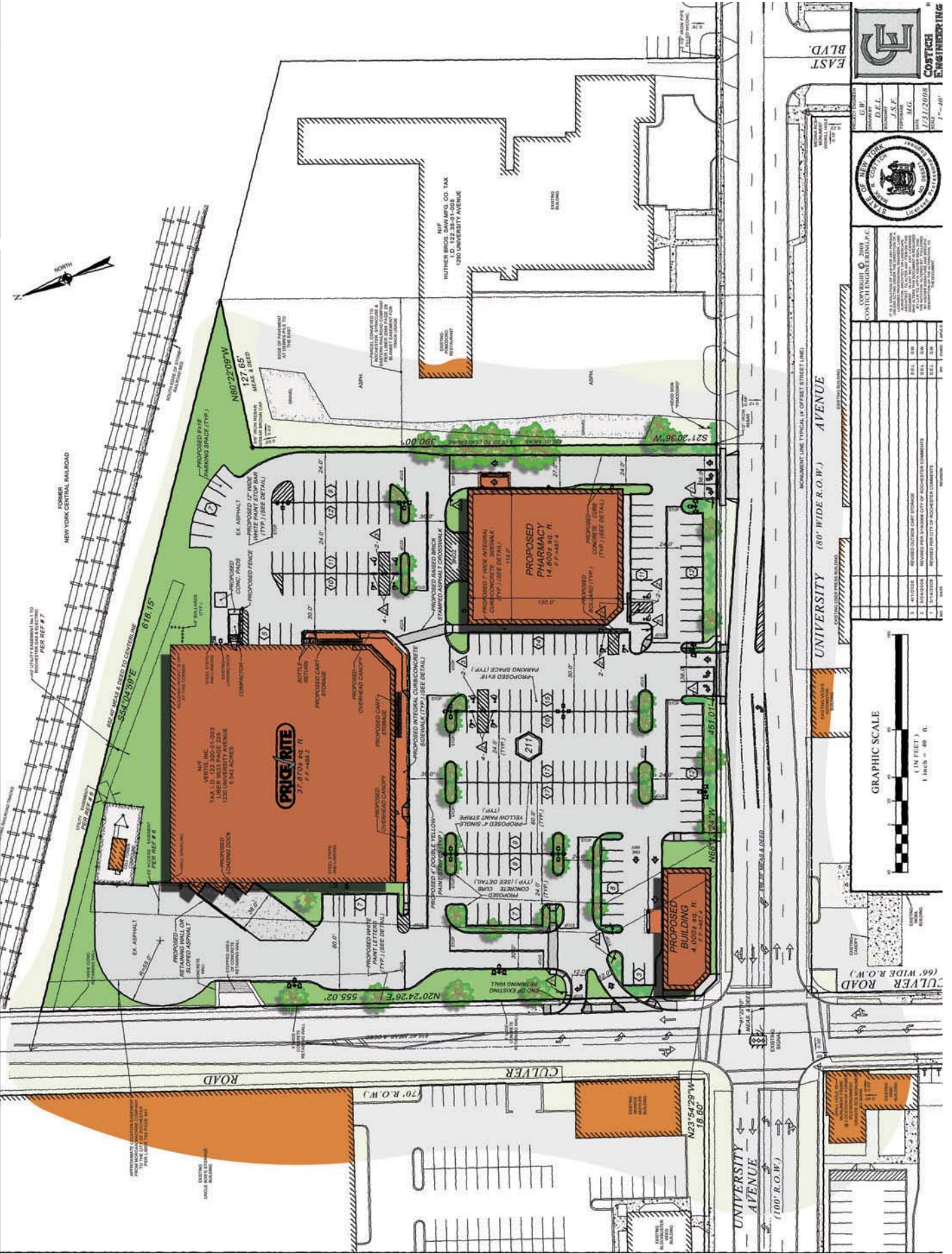
Fax:

**585-381-1437**

683 Pittsford Victor Rd. • Suite 300 • Pittsford, NY 14534 • [jaf@jfiorieco.com](mailto:jaf@jfiorieco.com)

*No warranty or representation, expressed or implied, is made as to the accuracy of the information contained herein, and same is submitted subject to errors, omissions, change of price, rental or withdrawal without notice.*

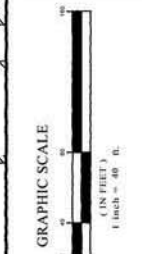
# Culver & University



**COSTICH ENGINEERING**  
1/31/2008  
P. 101



NO.	DATE	DESCRIPTION	BY	CHKD.
1	1/31/2008	ISSUED FOR PERMITTING	J.S.F.	J.S.F.
2	1/31/2008	ISSUED FOR PERMITTING	J.S.F.	J.S.F.
3	1/31/2008	ISSUED FOR PERMITTING	J.S.F.	J.S.F.



**UNIVERSITY AVENUE (80' WIDE R.O.W.)**

**CULVER ROAD (66' WIDE R.O.W.)**

